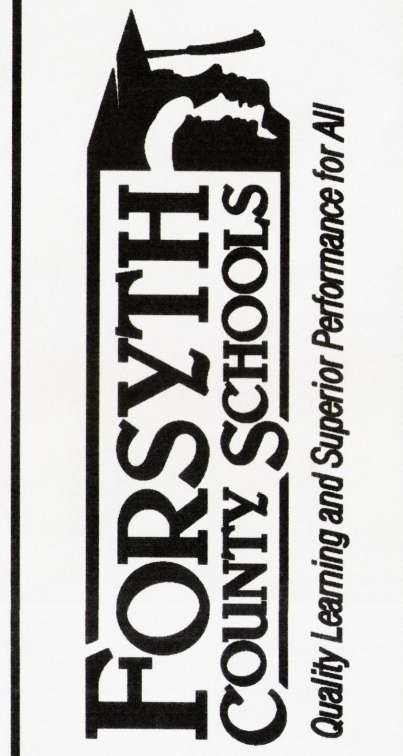
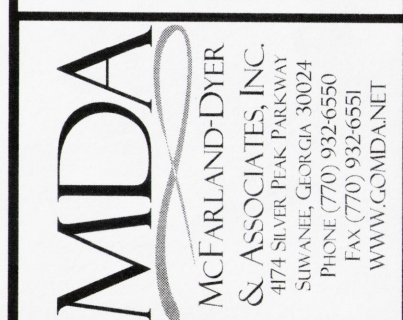


| PROJECT SUMMARY | BUILDING AREA | INSTRUCTIONAL UNITS |
|--------------------------|-----------------|----------------------|
| STARY SCHOOL #23 | | |
| GRADES K THRU 5TH | LEVEL 01 | CLASSROOMS 64 |
| F.T.E.: 1175 | TOTAL | SPECIAL NEEDS 1 |
| G.D.O.# : TO BE ASSIGNED | 17,997 SF | SCIENCE LAB 1 |
| | 117,997 SF | COMPUTER LAB 1 |
| | | PHYSICAL EDUCATION 1 |
| | | MEDIA CENTER 1 |
| | | ART 1 |
| | | TOTAL 74 |
| | COVERED AREAS | |
| | COVERED AREAS | 5,184 SF |
| | UNCOVERED AREAS | 12,813 SF |
| | TOTAL | 2,993 SF |



SMALLWOOD
3495 Piedmont Road NE, Building 10
Suite 700, Atlanta, Georgia 30305
404-233-5453 | smallwood-us.com



SKETCH PLAT

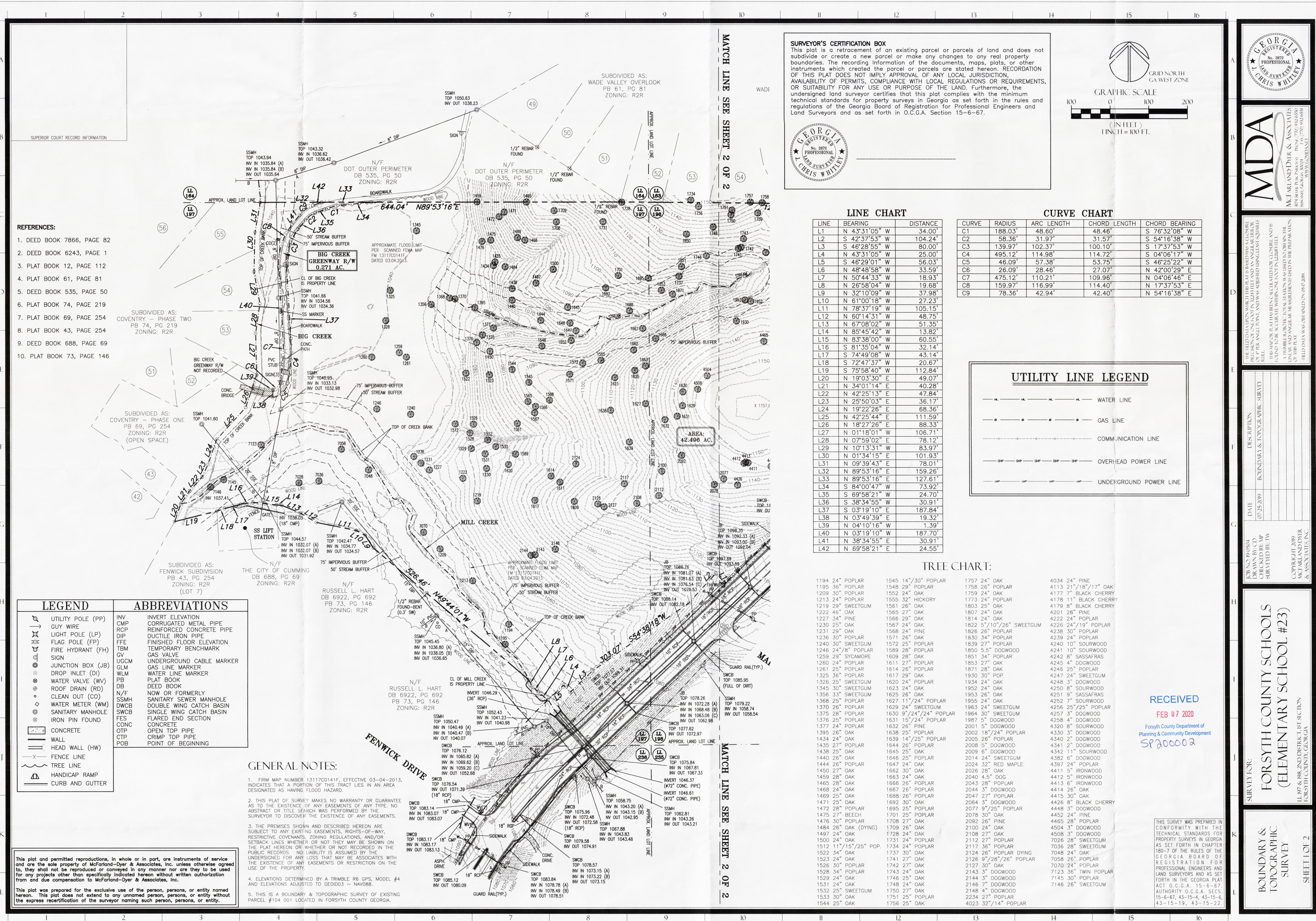
FCS Forsyth County Schools - Elementary School #23

Castleberry Rd
Cumming, GA 30040

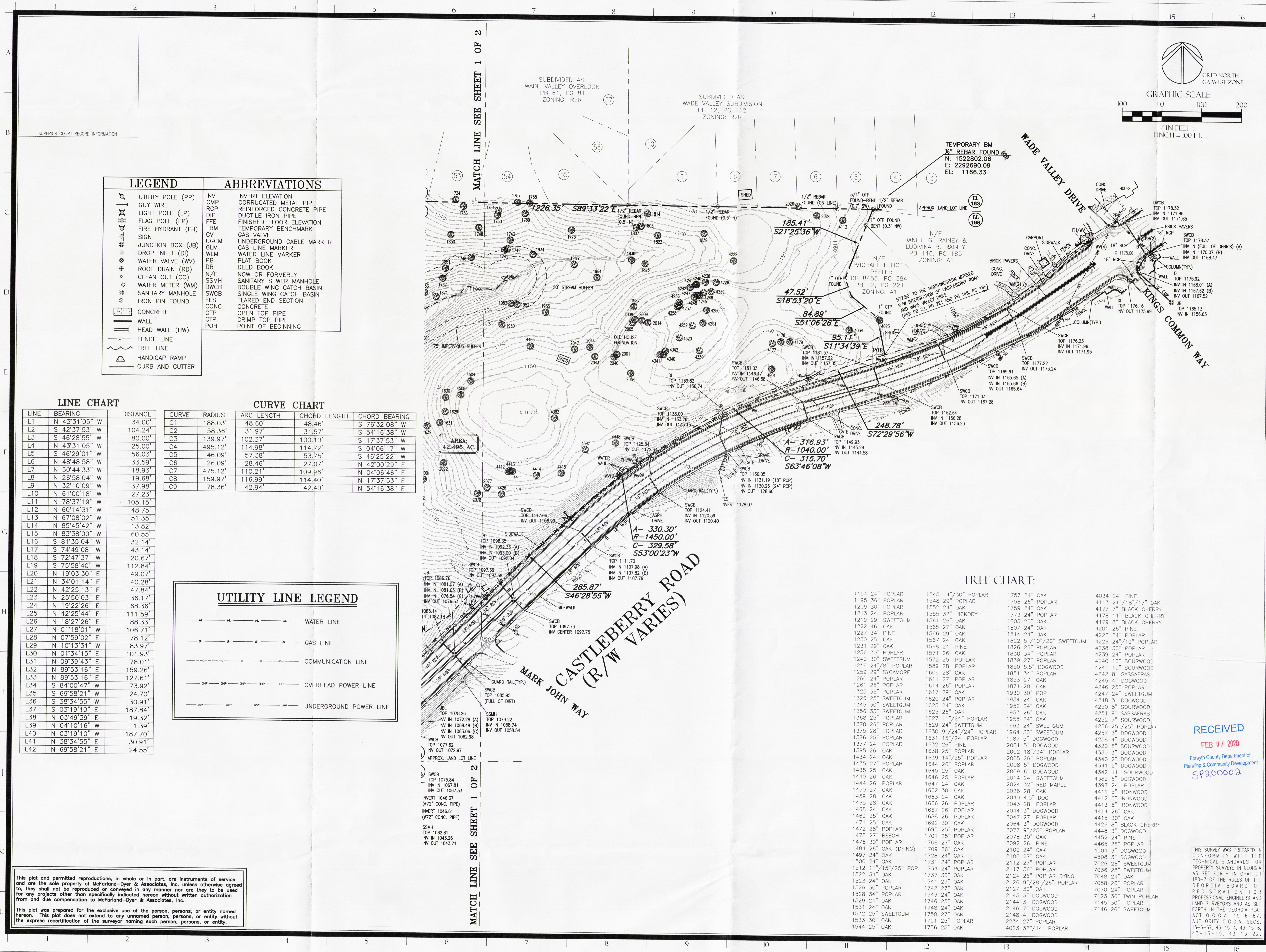
| | |
|-------|-----------|
| DATE | 1/31/2020 |
| JOB | 218037.00 |
| SHEET | SK-1 |

NOT ISSUED FOR CONSTRUCTION

© 2018 SMALLWOOD, REYNOLDS, STEWART AND ASSOCIATES, INC. THIS DRAWING IS THE PROPERTY OF THE ARCHITECT AND MAY NOT BE REPRODUCED OR USED WITHOUT WRITTEN PERMISSION.



THIS DOCUMENT HAS BEEN INCLUDED IN THE PLAN SET FOR REFERENCE ONLY. IT IS THE CONTRACTOR'S RESPONSIBILITY TO SURVEY AND ESTABLISH ALL PROPERTY BOUNDARIES, MONUMENTATION AND TO VERIFY ALL TOPOGRAPHIC DATA AND UTILITY LOCATIONS AND TO MAINTAIN LOCATIONS OF ALL SUCH DATA THROUGHOUT THE DURATION OF CONSTRUCTION.



| LEGEND | | ABBREVIATIONS | |
|--------|-------------------|---------------|--------------------------|
| | UTILITY POLE (PP) | INV | INVERT ELEVATION |
| | GUY WIRE | CMP | CORRUGATED METAL PIPE |
| | LIGHT POLE (LP) | RCP | REINFORCED CONCRETE PIPE |
| | FLAG POLE (FP) | DIP | DUCTILE IRON PIPE |
| | FIRE HYDRANT (FH) | FFE | FINISHED FLOOR ELEVATION |
| | SIGN | TBM | TEMPORARY BENCHMARK |
| | JUNCTION BOX (JB) | GY | GAS VALVE |
| | DROP INLET (DI) | UGCM | UNDERGROUND CABLE MARKER |
| | WATER VALVE (WV) | GLM | GAS LINE MARKER |
| | ROOF DRAIN (RD) | WLM | WATER LINE MARKER |
| | CLEAN OUT (CO) | PB | PLAT BOOK |
| | WATER METER (WM) | DB | DEED BOOK |
| | SANITARY MANHOLE | N/F | NOW OR FORMERLY |
| | IRON PIN FOUND | SSMH | SANITARY SEWER MANHOLE |
| | CONCRETE | DWCB | DOUBLE WING CATCH BASIN |
| | WALL | SWCB | SINGLE WING CATCH BASIN |
| | HEAD WALL (HW) | FLS | FLARED END SECTION |
| | FENCE LINE | CONC | CONCRETE |
| | TREE LINE | OTP | OPEN TOP PIPE |
| | HANDICAP RAMP | CTP | CRIMP TOP PIPE |
| | CURB AND GUTTER | POB | POINT OF BEGINNING |

| LINE CHART | | | CURVE CHART | | | |
|------------|---------------|----------|-------------|---------|------------|--------------|
| LINE | BEARING | DISTANCE | CURVE | RADIUS | ARC LENGTH | CHORD LENGTH |
| L1 | N 43°31'05" W | 34.00' | C1 | 188.03' | 48.60' | 48.46' |
| L2 | S 42°37'53" W | 104.24' | C2 | 58.36' | 31.97' | 31.57' |
| L3 | S 46°28'55" W | 80.00' | C3 | 139.97' | 102.37' | 100.10' |
| L4 | N 43°31'05" W | 25.00' | C4 | 495.12' | 114.98' | 114.72' |
| L5 | S 46°29'01" W | 56.03' | C5 | 46.09' | 57.38' | 53.75' |
| L6 | N 48°48'58" W | 33.59' | C6 | 26.09' | 28.46' | 27.07' |
| L7 | N 50°44'33" W | 18.93' | C7 | 475.12' | 110.21' | 109.96' |
| L8 | N 26°58'04" W | 19.68' | C8 | 159.97' | 116.99' | 114.40' |
| L9 | N 32°10'09" W | 37.98' | C9 | 78.36' | 42.94' | 42.40' |
| L10 | N 61°00'18" W | 27.23' | | | | |
| L11 | N 78°37'19" W | 105.15' | | | | |
| L12 | N 60°14'31" W | 48.75' | | | | |
| L13 | N 67°08'02" W | 51.35' | | | | |
| L14 | N 85°45'42" W | 13.82' | | | | |
| L15 | N 83°38'00" W | 60.55' | | | | |
| L16 | S 81°35'04" W | 32.14' | | | | |
| L17 | S 74°49'08" W | 43.14' | | | | |
| L18 | S 72°47'37" W | 20.67' | | | | |
| L19 | S 75°58'40" W | 112.84' | | | | |
| L20 | N 19°03'30" E | 49.07' | | | | |
| L21 | N 34°01'14" E | 40.28' | | | | |
| L22 | N 42°25'13" E | 47.84' | | | | |
| L23 | N 25°50'03" E | 36.17' | | | | |
| L24 | N 19°22'26" E | 68.36' | | | | |
| L25 | N 42°25'44" E | 111.59' | | | | |
| L26 | N 18°27'26" E | 88.33' | | | | |
| L27 | N 01°18'01" W | 106.71' | | | | |
| L28 | N 07°59'02" E | 78.12' | | | | |
| L29 | N 10°13'31" W | 83.97' | | | | |
| L30 | N 01°34'15" E | 101.93' | | | | |
| L31 | N 09°39'43" E | 78.01' | | | | |
| L32 | N 89°53'16" E | 127.61' | | | | |
| L33 | N 89°53'16" E | 127.61' | | | | |
| L34 | S 84°00'47" W | 73.92' | | | | |
| L35 | S 69°58'21" W | 24.70' | | | | |
| L36 | S 38°34'55" W | 30.91' | | | | |
| L37 | S 03°19'10" E | 187.84' | | | | |
| L38 | N 03°49'39" E | 19.32' | | | | |
| L39 | N 04°10'16" W | 1.39' | | | | |
| L40 | N 03°19'10" E | 187.70' | | | | |
| L41 | N 38°34'55" E | 30.91' | | | | |
| L42 | N 69°58'21" E | 24.55' | | | | |

| UTILITY LINE LEGEND | |
|---------------------|------------------------|
| | WATER LINE |
| | GAS LINE |
| | COMMUNICATION LINE |
| | OVERHEAD POWER LINE |
| | UNDERGROUND POWER LINE |

| TREE CHART: | | | |
|----------------------|-----------------------|-------------------------|-----------------------|
| 1194 24" POPLAR | 1545 147'30" POPLAR | 1757 24" OAK | 4034 24" PINE |
| 1195 36" POPLAR | 1548 29" POPLAR | 1758 26" POPLAR | 4113 21'18"/17" OAK |
| 1209 30" POPLAR | 1552 24" OAK | 1759 24" OAK | 4177 7" BLACK CHERRY |
| 1213 24" POPLAR | 1555 32" HICKORY | 1773 24" POPLAR | 4178 11" BLACK CHERRY |
| 1219 29" SWEETGUM | 1561 26" OAK | 1803 25" OAK | 4179 8" BLACK CHERRY |
| 1222 46" OAK | 1565 27" OAK | 1807 24" OAK | 4201 26" PINE |
| 1227 34" PINE | 1566 29" OAK | 1814 24" OAK | 4222 24" POPLAR |
| 1230 25" OAK | 1567 24" OAK | 1822 5'10"/26" SWEETGUM | 4226 24"/19" POPLAR |
| 1231 29" OAK | 1568 24" PINE | 1826 26" POPLAR | 4238 30" POPLAR |
| 1236 30" POPLAR | 1571 26" OAK | 1830 34" POPLAR | 4239 24" POPLAR |
| 1240 30" SWEETGUM | 1572 25" POPLAR | 1839 27" POPLAR | 4240 10" SOURWOOD |
| 1246 24'8" POPLAR | 1589 28" POPLAR | 1850 5.5' DOGWOOD | 4241 10" SOURWOOD |
| 1259 29" SYCAMORE | 1609 28" OAK | 1851 34" POPLAR | 4242 8" SASSAFRAS |
| 1260 24" POPLAR | 1611 27" POPLAR | 1853 27" OAK | 4245 4" DOGWOOD |
| 1261 25" POPLAR | 1614 26" POPLAR | 1871 28" OAK | 4246 25" POPLAR |
| 1305 36" POPLAR | 1617 29" OAK | 1930 30" POPLAR | 4247 24" SWEETGUM |
| 1326 25" SWEETGUM | 1620 24" POPLAR | 1934 24" OAK | 4248 3" DOGWOOD |
| 1345 30" SWEETGUM | 1623 24" OAK | 1952 24" OAK | 4250 8" SOURWOOD |
| 1356 33" SWEETGUM | 1625 26" OAK | 1953 26" OAK | 4251 9" SASSAFRAS |
| 1368 25" POPLAR | 1627 11'24" POPLAR | 1955 24" OAK | 4252 7" SOURWOOD |
| 1370 26" POPLAR | 1629 24" SWEETGUM | 1963 24" SWEETGUM | 4256 25'25" POPLAR |
| 1375 28" POPLAR | 1630 9'24"/24" POPLAR | 1964 30" SWEETGUM | 4257 3" DOGWOOD |
| 1376 25" POPLAR | 1631 15'24" POPLAR | 1967 5" DOGWOOD | 4258 8" DOGWOOD |
| 1377 24" POPLAR | 1632 26" PINE | 2001 5" DOGWOOD | 4320 8" SOURWOOD |
| 1395 26" OAK | 1638 25" POPLAR | 2002 18'24" POPLAR | 4330 3" DOGWOOD |
| 1434 24" OAK | 1639 14'25" POPLAR | 2005 26" OAK | 4340 2" DOGWOOD |
| 1435 27" POPLAR | 1644 26" POPLAR | 2008 6" DOGWOOD | 4341 2" DOGWOOD |
| 1438 25" OAK | 1645 25" OAK | 2009 6" DOGWOOD | 4342 11" SOURWOOD |
| 1440 26" OAK | 1646 25" POPLAR | 2014 24" SWEETGUM | 4362 6" DOGWOOD |
| 1444 26" POPLAR | 1647 24" OAK | 2024 32" RED MAPLE | 4397 24" POPLAR |
| 1450 27" OAK | 1662 30" OAK | 2026 28" OAK | 4411 5" IRONWOOD |
| 1459 28" OAK | 1663 24" OAK | 2040 4.5' DOG | 4412 5" IRONWOOD |
| 1465 28" OAK | 1666 26" OAK | 2043 28" POPLAR | 4413 6" IRONWOOD |
| 1468 24" OAK | 1667 26" POPLAR | 2044 3" DOGWOOD | 4414 26" OAK |
| 1469 25" OAK | 1688 26" POPLAR | 2047 27" POPLAR | 4415 30" OAK |
| 1471 25" OAK | 1692 30" OAK | 2064 3" DOGWOOD | 4426 8" BLACK CHERRY |
| 1472 28" POPLAR | 1695 25" POPLAR | 2077 9'25" POPLAR | 4448 3" DOGWOOD |
| 1475 27" BEECH | 1701 25" POPLAR | 2078 30" OAK | 4452 24" PINE |
| 1476 30" POPLAR | 1708 27" OAK | 2092 26" PINE | 4465 28" POPLAR |
| 1484 26" OAK (DYING) | 1709 28" OAK | 2100 24" OAK | 4504 3" DOGWOOD |
| 1497 24" OAK | 1728 24" OAK | 2108 27" OAK | 4508 3" DOGWOOD |
| 1500 24" OAK | 1731 24" POPLAR | 2112 27" POPLAR | 7026 26" SWEETGUM |
| 1512 11'15"/25" POP. | 1734 24" POPLAR | 2117 36" POPLAR | 7036 26" SWEETGUM |
| 1522 34" OAK | 1737 30" OAK | 2124 26" POPLAR DYING | 7043 30" POPLAR |
| 1523 24" OAK | 1741 27" OAK | 2126 9'28"/26" POPLAR | 7058 26" POPLAR |
| 1526 30" POPLAR | 1742 27" OAK | 2127 30" OAK | 7070 24" POPLAR |
| 1528 34" POPLAR | 1743 24" OAK | 2143 33" DOGWOOD | 7123 36" TWIN POPLAR |
| 1529 24" OAK | 1746 25" OAK | 2144 3" DOGWOOD | 7145 30" POPLAR |
| 1531 24" OAK | 1748 24" OAK | 2146 7" DOGWOOD | 7146 26" SWEETGUM |
| 1532 25" SWEETGUM | 1750 27" OAK | 2148 4" DOGWOOD | |
| 1533 30" OAK | 1751 25" POPLAR | 2234 27" POPLAR | |
| 1544 25" OAK | 1756 25" OAK | 4023 32'14" POPLAR | |

RECEIVED
FEB 07 2020
Forsyth County Department of
Planning & Community Development
SP200002

THIS SURVEY WAS PREPARED IN CONFORMITY WITH THE TECHNICAL STANDARDS FOR PROPERTY SURVEYS IN GEORGIA AS SET FORTH IN CHAPTER 160-7 OF THE RULES OF THE GEORGIA BOARD OF PROFESSIONAL ENGINEERS AND LAND SURVEYORS AND AS SET FORTH IN THE GEORGIA PLAT ACT O.C.G.A. 15-6-67, 15-6-67, 43-15-4, 43-15-6, 43-15-19, 43-15-22.

FORSYTH COUNTY SCHOOLS
(ELEMENTARY SCHOOL #23)

BOUNDARY & TOPOGRAPHIC SURVEY

SURVEY FOR:

SHEET 2 OF 2

THIS DOCUMENT HAS BEEN INCLUDED IN THE PLAN SET FOR REFERENCE ONLY. IT IS THE CONTRACTOR'S RESPONSIBILITY TO SURVEY AND ESTABLISH ALL PROPERTY BOUNDARIES, MONUMENTATION AND TO VERIFY ALL TOPOGRAPHIC DATA AND UTILITY LOCATIONS AND TO MAINTAIN LOCATIONS OF ALL SUCH DATA THROUGHOUT THE DURATION OF CONSTRUCTION.

REF-2 REFERENCE SURVEY